

Inside Left Panel
(When Cover Opened)

Inside Right Panel
(When Cover Opened)

Back Cover

Front Cover



Double Parallel Fold Brochure (Outside)

Cut Size: 11" x 17"

Folded Size: 4.25" x 11"

----- = Bleed Line

———— = Cut Line

———— = Safety Line

•When opening or importing template files make sure to do so at 300DPI, CMYK Color Mode.

•If you would like your final product to bleed (images or colors printed to the cut edge) you must extend your colors or images to the red dotted line. Anything outside of the black cut line will be cut off.

•All text, logos, and other important elements must stay within the green box. If they are outside of the green box you risk them getting trimmed off during cutting.

•Please delete this template layer before submitting your artwork.

4.25"

4.25"

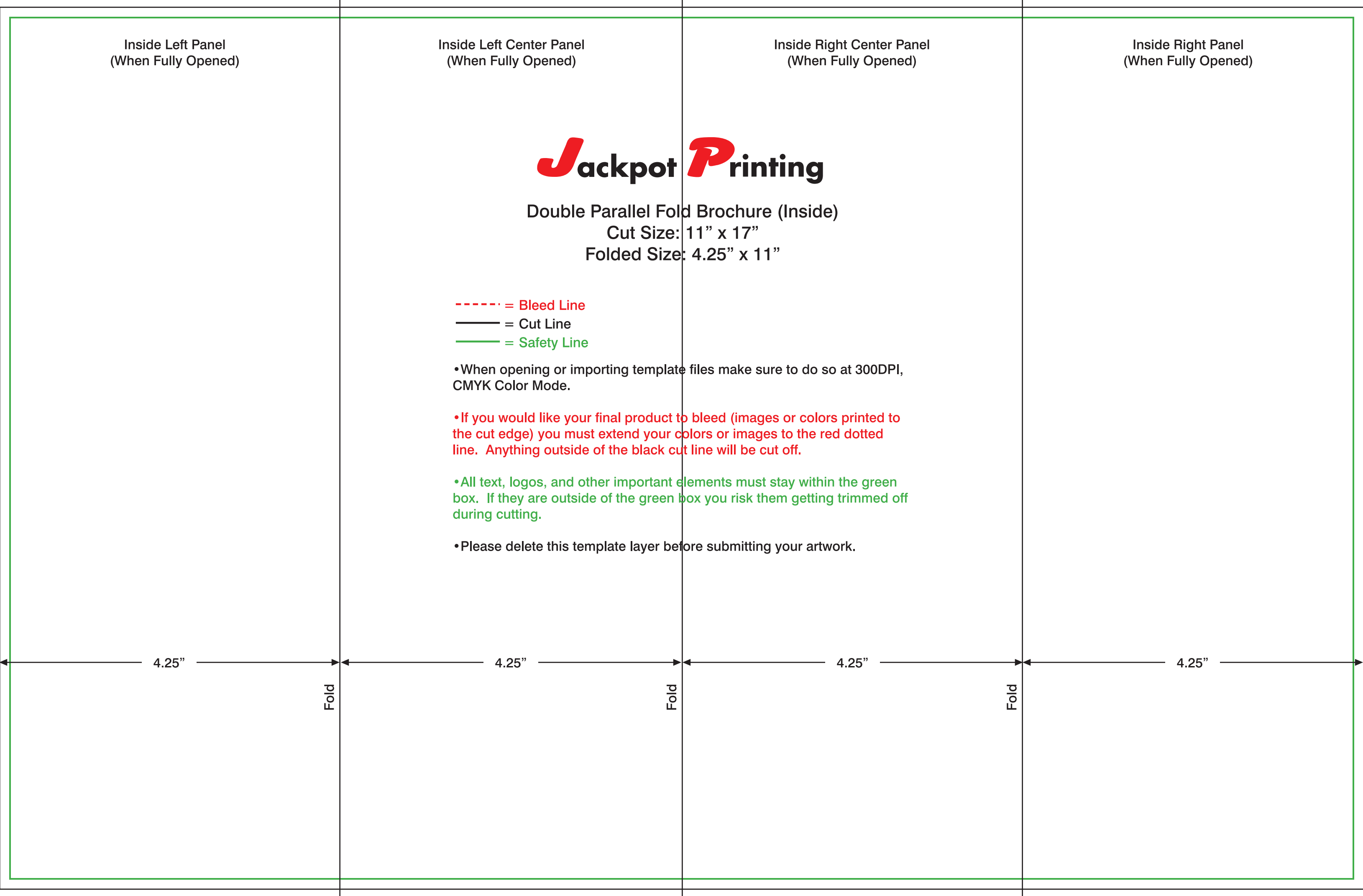
4.25"

4.25"

Fold

Fold

Fold



Inside Left Panel
(When Fully Opened)

Inside Left Center Panel
(When Fully Opened)

Inside Right Center Panel
(When Fully Opened)

Inside Right Panel
(When Fully Opened)



Double Parallel Fold Brochure (Inside)

Cut Size: 11" x 17"

Folded Size: 4.25" x 11"

----- = Bleed Line

———— = Cut Line

———— = Safety Line

•When opening or importing template files make sure to do so at 300DPI, CMYK Color Mode.

•If you would like your final product to bleed (images or colors printed to the cut edge) you must extend your colors or images to the red dotted line. Anything outside of the black cut line will be cut off.

•All text, logos, and other important elements must stay within the green box. If they are outside of the green box you risk them getting trimmed off during cutting.

•Please delete this template layer before submitting your artwork.

4.25"

4.25"

4.25"

4.25"

Fold

Fold

Fold